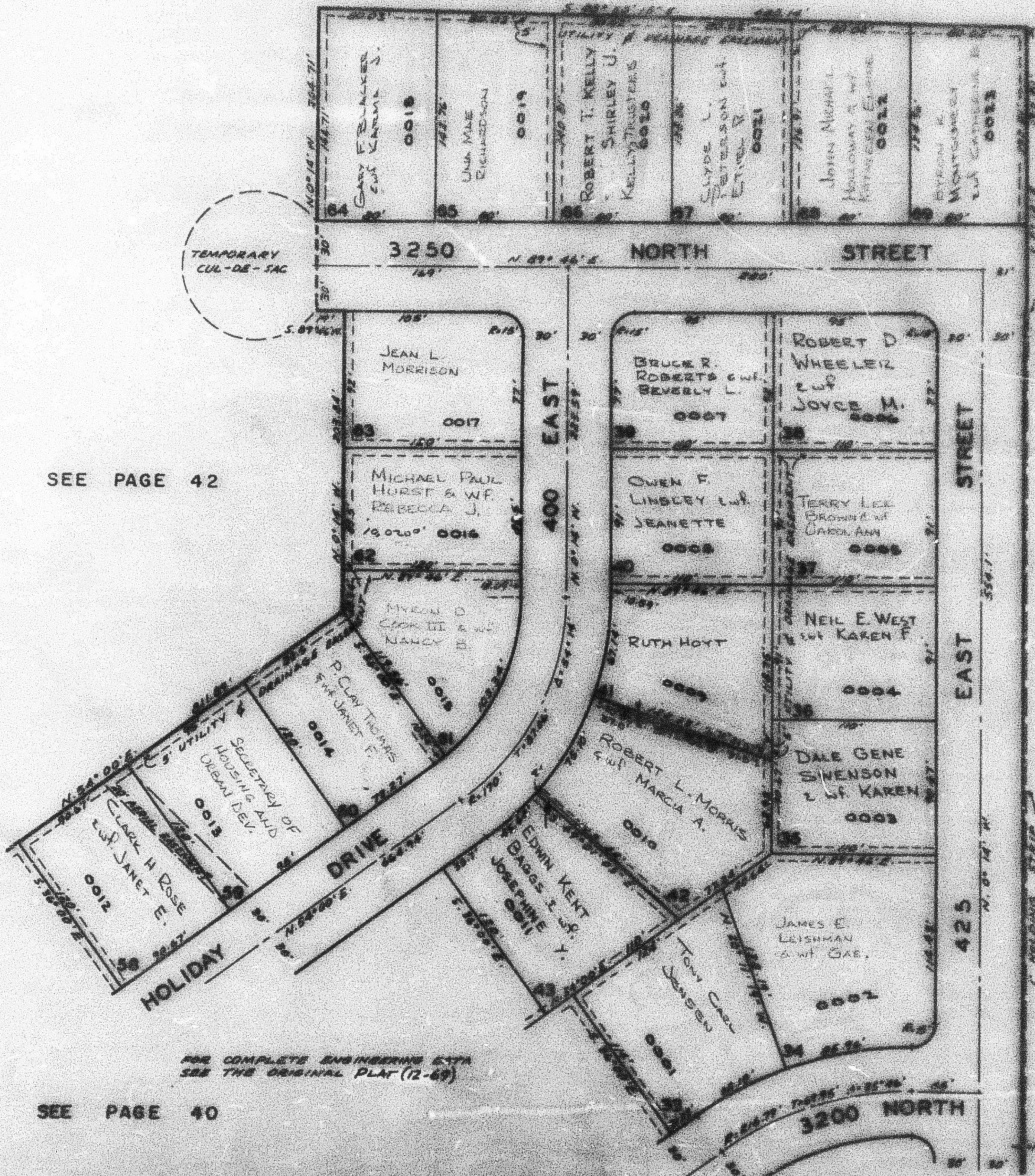


PART OF N.E. 1/4 OF SEC. 29, T.7N., R.1W., S.L.B.&M.
MT. LOMOND ESTATES NO. 1
 IN NORTH OGDEN CITY
 LOTS 33-43, 58-69
 SCALE: 1" = 60'

TAXING UNIT 10

PREFIX: 17-041

SEE BOOK 16, PAGE 37



SEE PAGE 42

SEE PAGE 38-1

FOR COMPLETE ENGINEERING DATA
 SEE THE ORIGINAL PLAT (12-69)

SEE PAGE 40